

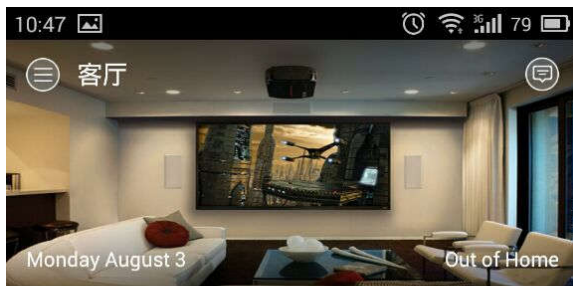


Wifi light: it should be blue blinking.

Power light

Wifi button

Step 1: Press and hold wifi button for 5seconds, wait wifi light turn blue blinking.

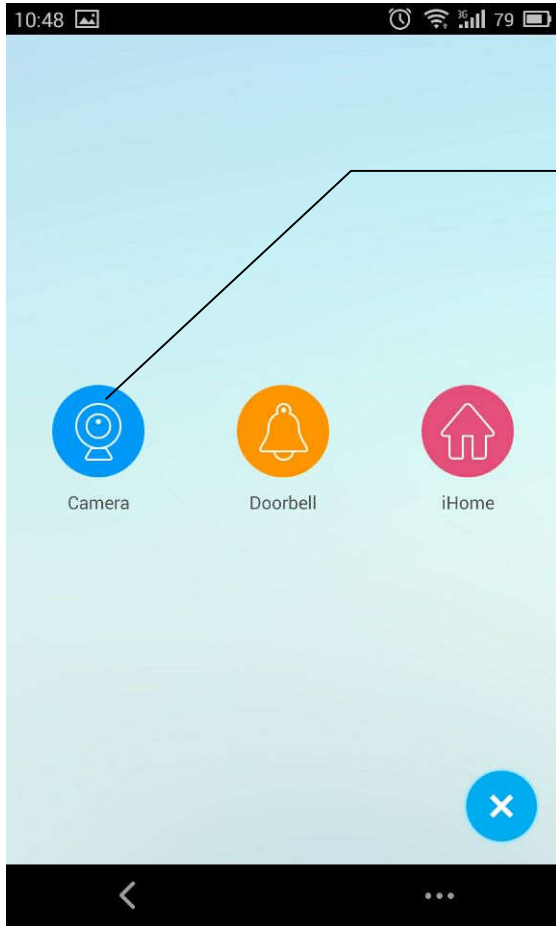


Click on the "+" to add your device!

Click here

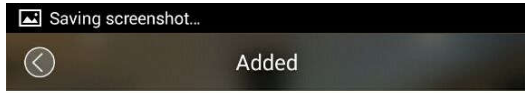


Step2: make sure the wifi light is blue blinking, then open APP, and click the '+'



Click here

Step 3: Click 'camera'



Click here

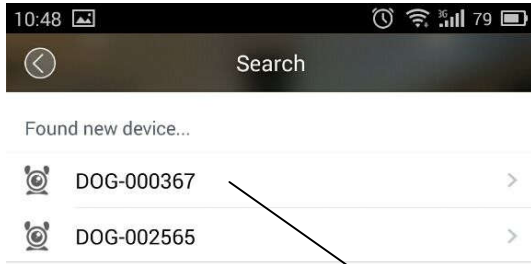
Please make sure the WIFI indicator is blue and blinking. If not, please press the WIFI button about three seconds.

WIFI blue flashing lights



Step 4: make sure wifi light is blue

blinking ,and click.

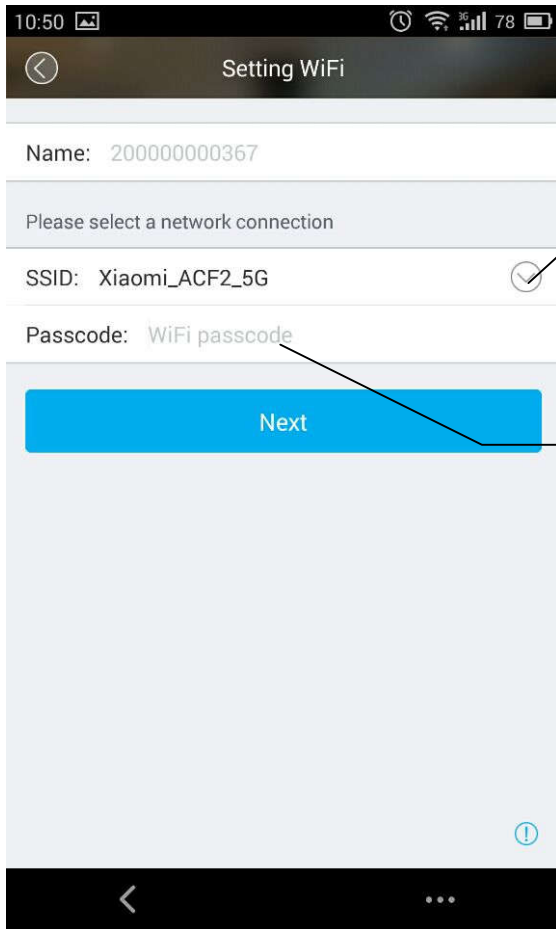


Choose the same CID (0367)camera



Step 5: Click DOG-000367

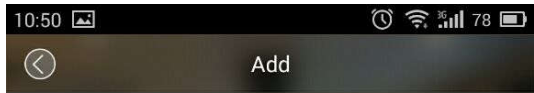




Click here and choose a local wifi Internet.

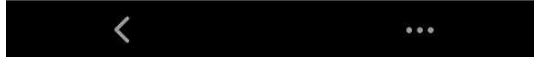
Enter password of the wifi , differ big and small letters, then click "next"

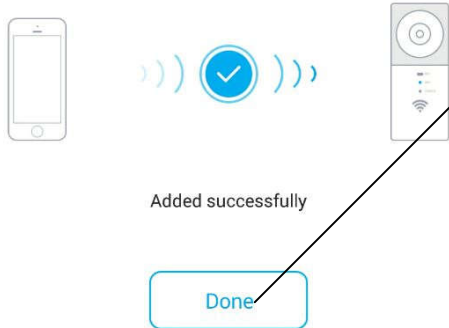
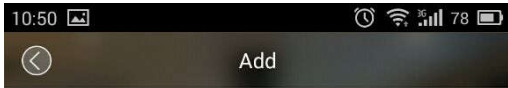
Step6: Enter password of the wifi



Adding...,it needs about 1 minute,please wait...

Added step:
1.Network Connected
2. Sign up and activate CID
3.Binded with the current account





Click here, it means the camera has bound with the account, but hasn't connected with wifi. Pls wait.

- Added step:
1. Network Connected
 2. Sign up and activate CID
 3. Bind with the current account
- ⓘ



Step 7: Click 'done'



When connecting the wifi, the progress of wifi light: red blinking slowly---red blinking quickly---blue constantly on. (If it blinks between color red and blue, the software is upgrading, pls wait)

If the wifi light blink once per second but not connect for a long time, you may have enter wrong passwords, pls differ the big and small letters, and enter the passwords with no special symbols)



Connected with the wifi successfully, the wifi light will be blue on constantly and the APP will show online,

