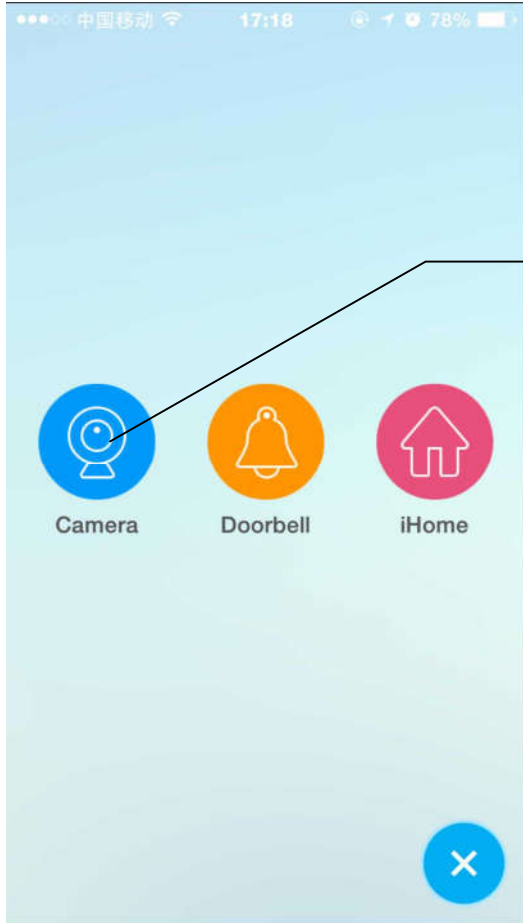




homepage

Click on the "+" to add your device

Click here



Click here

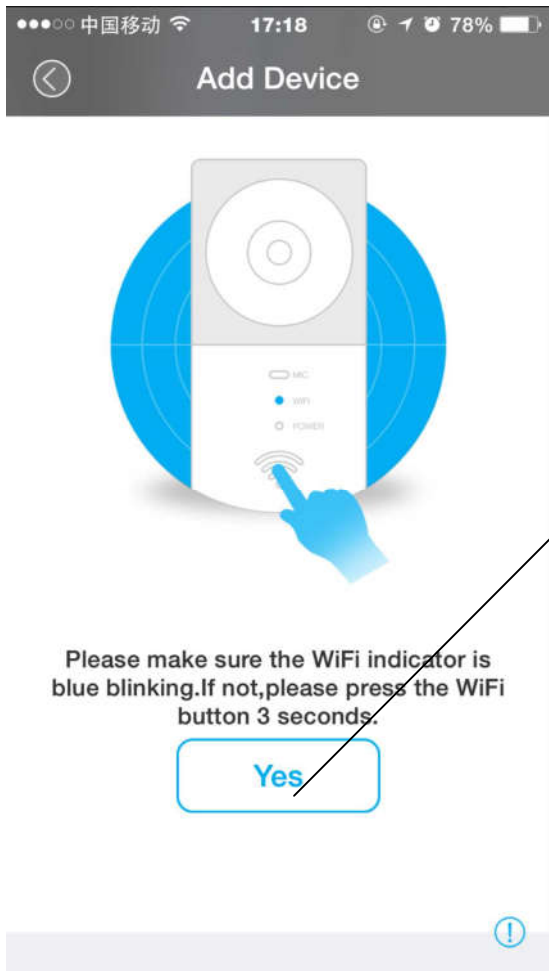


7

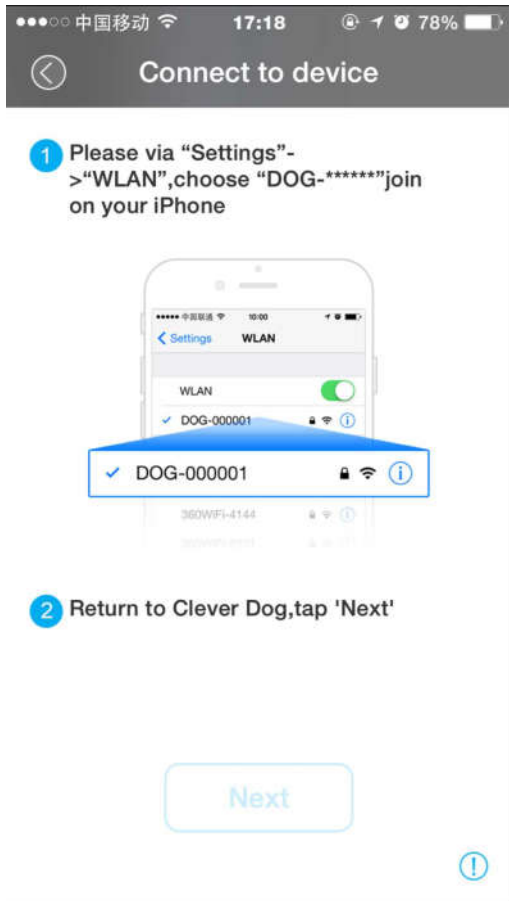
Wifi light

Power light

Hold down the wifi button, turn the red wifi light blue flashing.

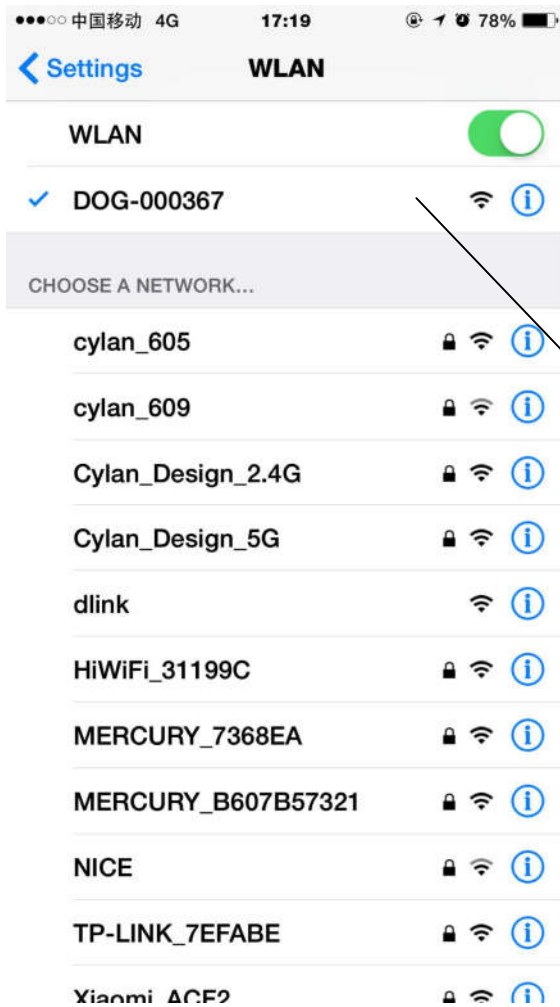


Click here.



iPhone's 'settings'

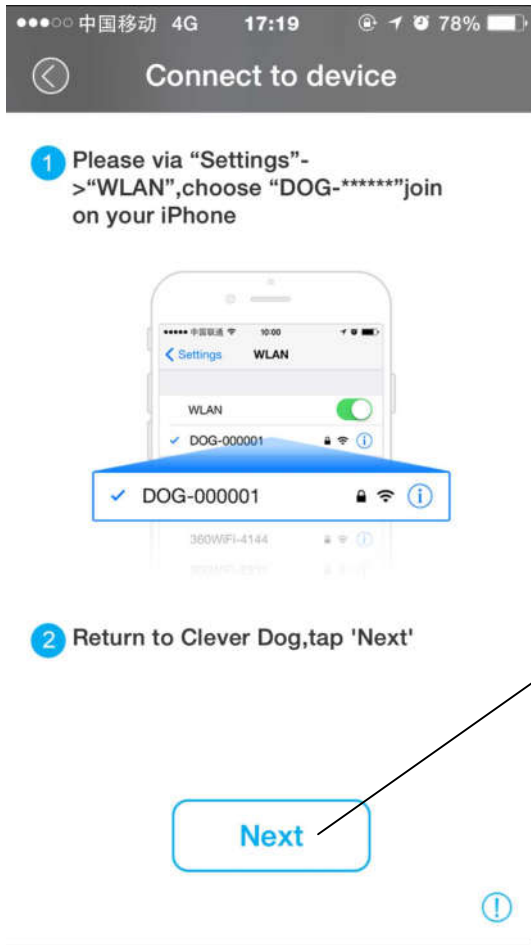
Click here.



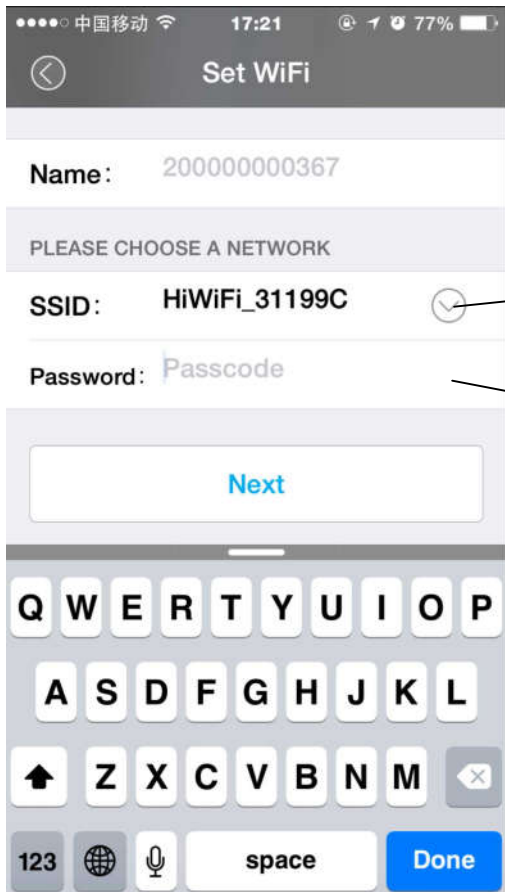
Connect with the net dog\*\*\*\*\*, and If it need a password, please enter '11111111'.



12

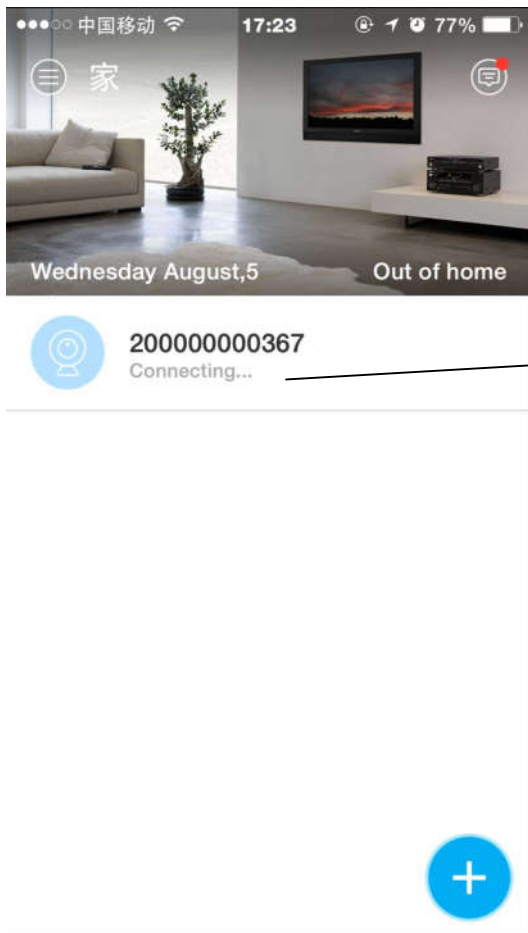
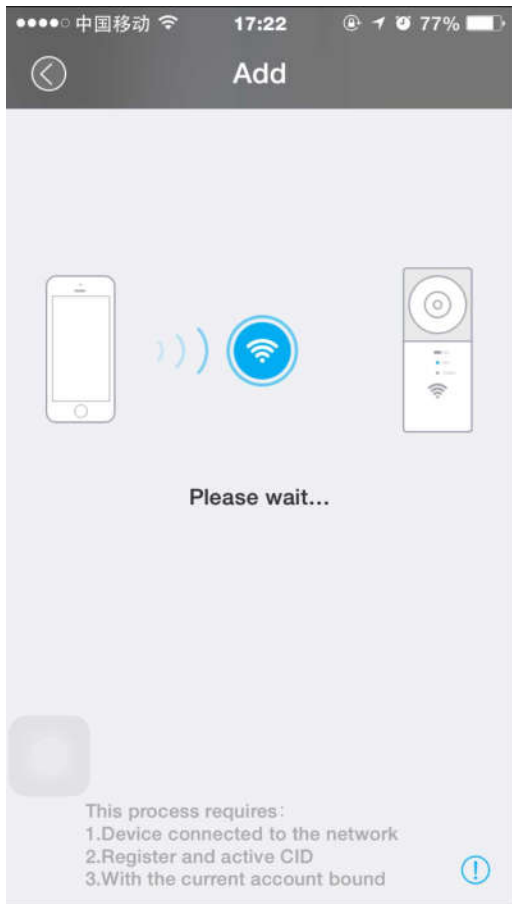


Back to the APP, click here.



Click here, join a known wifi network.

Enter the password here. Then click 'next'

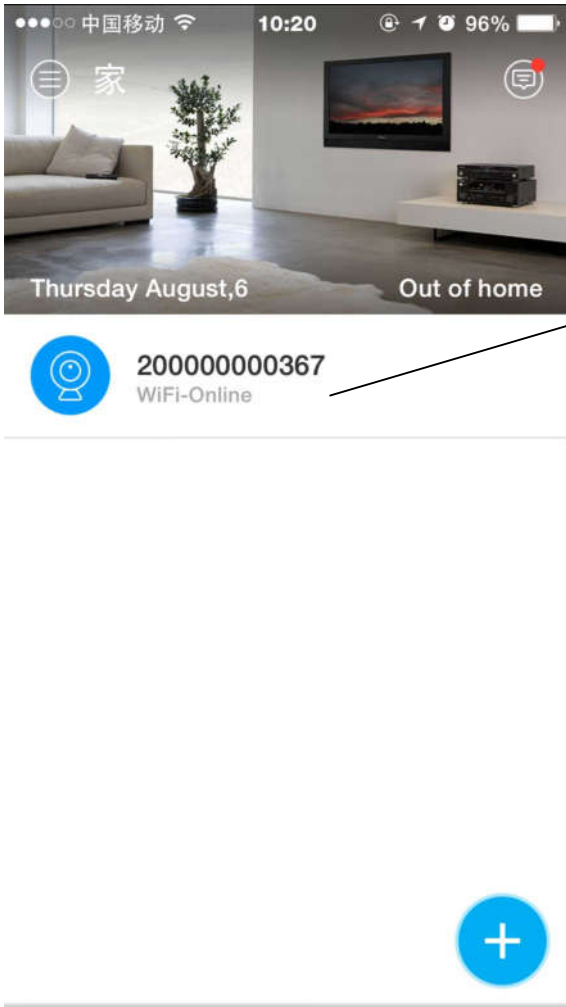


The camera has bound with your account, but hasn't connect with the Internet.



17

The changing process of wifi light: red blinking slowly—red blinking quickly—blue on constantly. (If it flashing between red and blue, the camera is updating software.)



Camera is online now. click here to view the video.



The wifi light is blue on , no blinking, The camera is online now.